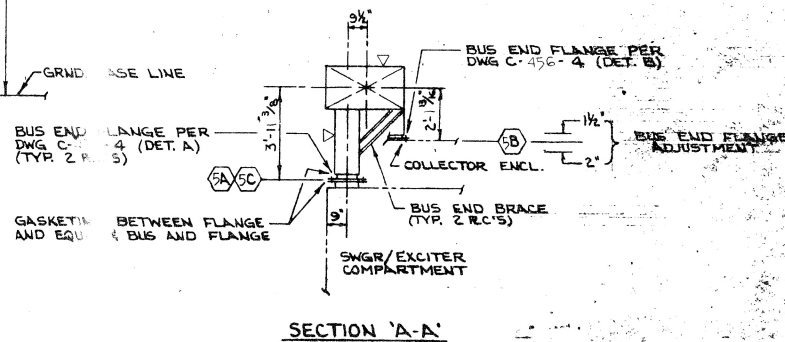
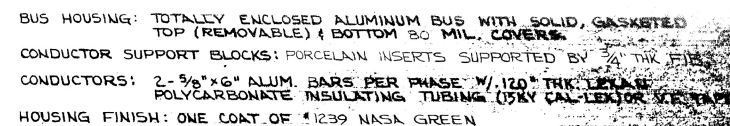






NOTE:
CUSTOMER TO CAULK ALL BUS
END FLANGES (3) AT EQUIP.
CONNECTIONS. USE RTV COMPOUND
OR SIMILAR.



 DENOTES A BUS SPLICE OR END
 DENOTES A BUS SUPPORT
 DENOTES REMOVABLE COVER SIDE OF BUS
 DIMENSION REQ'D FOR FABRICATION

151 / 3000AMP. 3PHASE BAR BUS
LAYOUT
FOR
GENERAL ELECTRIC
LARGE GAS TURBINE OPERATION
PART ~~OF~~ ARRANGEMENT

008789

2-4-6-8
FEB 5 1974
C 1155